

米家智能電風扇 座地式1X 使用說明書	1
Mi Smart Standing Fan 1X User Manual	10
WARRANTY NOTICE	20



## 安全須知

使用產品前請仔細閱讀本說明書，並妥善保管。

### 注意

#### 安裝

- ⚠ 請務必按說明書正確安裝本產品，否則會發生觸電、火災、人身傷害以及其他損害。
- ⚠ 風扇未組裝完成，請勿連通電源。

#### 搬運

- ⚠ 移動時，請務必使主機停止運行，並拔出電源插頭。
- ⚠ 握牢風扇支柱，以免掉落傷人。

#### 使用中

- ⚠ 若產品發生異響、異味、高溫、風扇轉動頻率不一致等異常時，請立即停止使用。
- ⚠ 請勿倚靠或在運行時傾斜風扇。
- ⚠ 請勿手動反覆搖擺風扇，以免內部傳動機構損壞。

#### 電源線

- ⚠ 在進行維護作業或移動風扇之前，請從交流電源插座上斷開交流電源線的連接。
- ⚠ 斷開交流電源線連接時，請勿拉扯交流電源線。
- ⚠ 若電源軟線損壞，必須使用專用軟線或者從其製造商或維修部購買到的專用零件來更換。

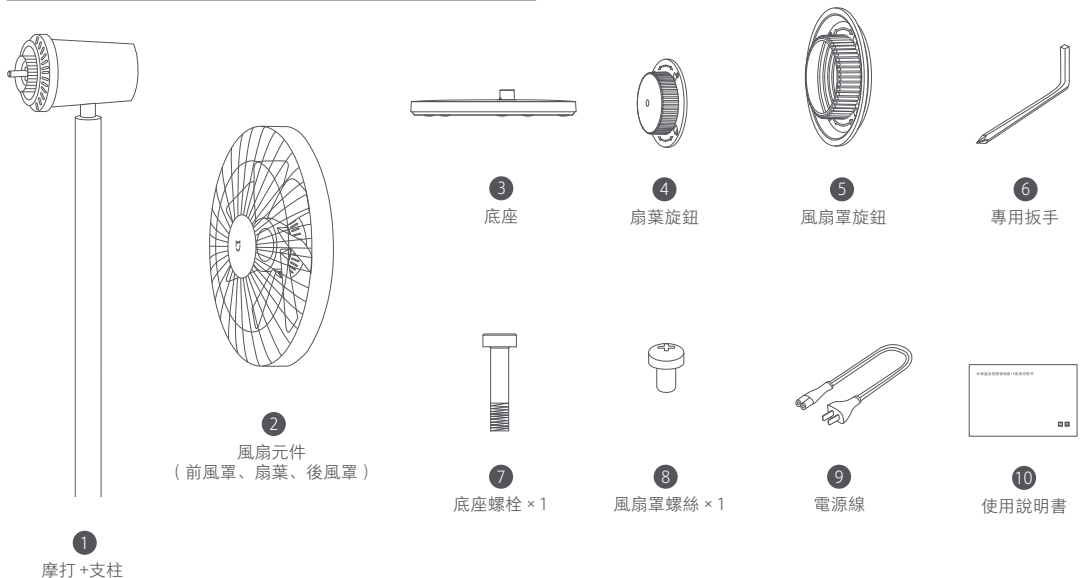
### 警告

如使用不當，則可能發生觸電、火災、人身傷害以及其他損害。

- ⊗ 請勿在附近有易傾斜或不穩定物體的場所使用本產品。
- ⊗ 請勿在浴室等高溫、潮濕的環境下使用本產品。
- ⊗ 電源線損壞或電源插頭鬆動時，請勿使用本產品。
- ⊗ 前風罩未安裝或後風罩鬆動、脫落時，請勿運行本產品。
- ⊗ 請勿讓兒童或未瞭解本說明書的成人操作本產品。
- ⊗ 請勿私自對本產品進行拆卸維修。
- ⊗ 請勿過度擰捏、彎曲或扭轉交流電源線，以免線芯外露或折斷。
- ⊗ 請勿將手指或異物插入前風罩、後風罩或運轉的扇葉中。
- ⊗ 請勿將頭髮、織物等靠近風扇，以免被捲入造成危險。
- ⊗ 請勿使用不適當的交流電源插座。
- ⊗ 請勿在任何其他裝置上使用本產品所提供的交流電源線。

1

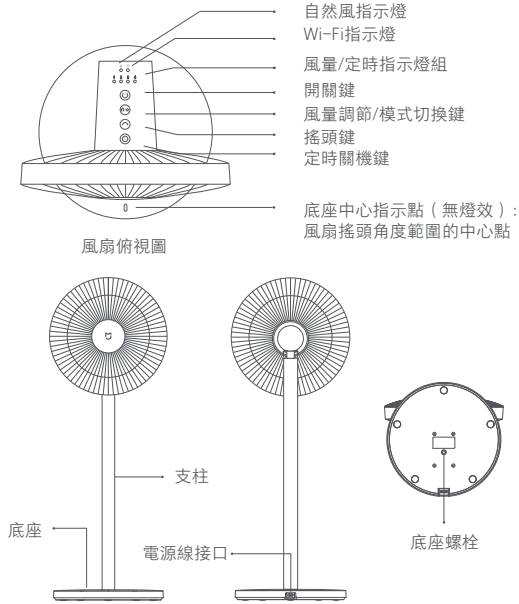
## 包裝清單



提示：說明書中的產品、配件、使用者介面等插圖均為示意圖，僅供參考。由於產品的更新與升級，產品實物與示意圖可能略有差異，請以實物為準。

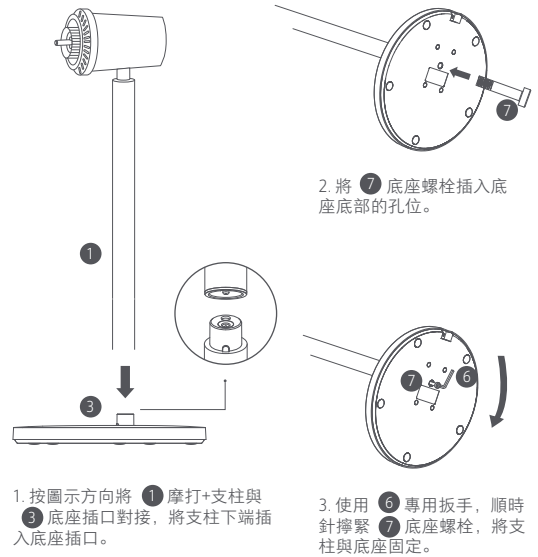
2

## 產品介紹



## 安裝

### 安裝步驟一：底座安裝

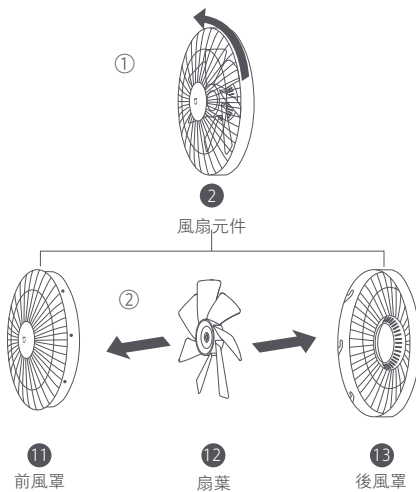


3

## 安裝

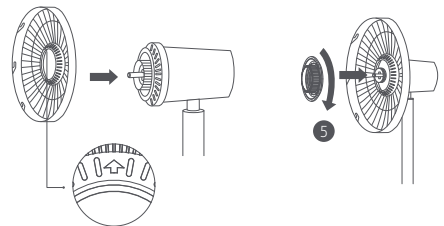
### 安裝步驟二：開啟風扇元件

取出 ② 風扇元件，如下圖 ① 逆時針旋轉前風罩至前後風罩鬆動，按圖 ② 方向向外卸下前風罩與後風罩，然後取出扇葉。



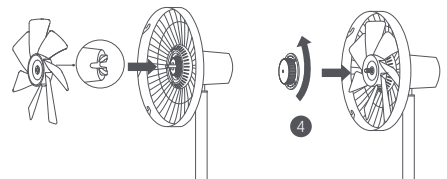
### 安裝步驟三：安裝後風罩

將後風罩對位點“↑”向上，安裝至摩打軸，再將 ⑤ 風扇罩旋鈕安裝至摩打軸並順時針轉緊，使後風罩與摩打軸固定。



### 安裝步驟四：安裝扇葉

將扇葉中心孔對準摩打軸，安裝入位，再將 ④ 扇葉旋鈕安裝至摩打軸並逆時針轉緊，將扇葉緊固。

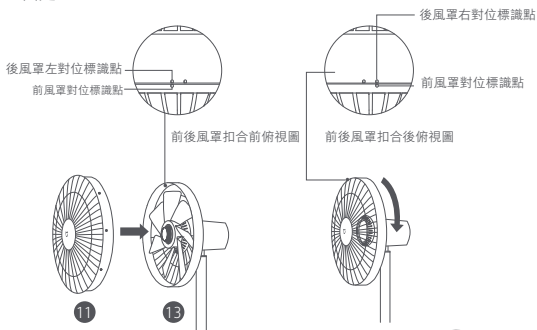


4

## 安裝

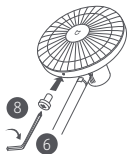
### 安裝步驟五：安裝前風罩

- 將 11 前風罩對位標試點對準 13 後風罩左對位標識點，然後嵌入後風罩卡槽。
- 順時針旋轉前風罩，使前風罩對位標識點與後風罩右對位標識點對齊並固定。



### 安裝步驟六：固定前風罩

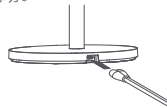
將 8 風扇罩螺絲插入風扇罩底部的孔位，使用 6 專用扳手順時針擰緊。



## 使用

### 連接電源

將電源線連接至主機底部的電源接口，再接入電源，聽到「嗚」的提示音後，風扇連接電源成功。



### 開關機

開機：

按 按鍵，風扇開始工作。首次使用，開機風量為 1 檔。關機後，再次開機，風扇預設為上次使用時風量的檔位。

關機：

開機狀態下按 按鍵，風扇停止工作。

### 風量調節/模式切換設定

風量調節

短按 按鍵，切換風速檔位。每按一次，風量會在 1、2、3、4 檔之間切換一次，同時相應的狀態指示燈常亮（如下表）。

檔位：	1 檔	2 檔	3 檔	4 檔
顯示狀態	●●●●	●●●●	●●●●	●●●●

提示：● 點亮狀態 ● 熄滅狀態

5

## 使用

### 模式切換

長按 按鍵，可切換「直吹風」和「自然風」模式。自然風模式下，自然風指示燈常亮；直吹風模式下，自然風指示燈熄滅。模式切換的操作，不會改變風扇當前的風量檔位。

提示：風扇出廠模式為直吹風模式，關機後，再次開機，模式預設為上次使用時模式的設定。

### 風扇搖頭控制設定

按 按鍵，可開啟 140° 搖頭與關閉搖頭。關機後，再次開機，風扇預設為上次使用時搖頭控制的設定。斷開電源重新啟動或重置 Wi-Fi 後，開啟搖頭，風扇會進入搖頭角度校準狀態，不同角度校準所需時長不同，請耐心等待。

### 定時關機設定

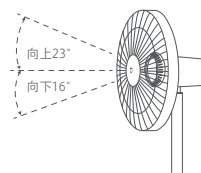
按 按鍵，可進行定時時長切換。每按一次，定時關機時間會在 1 小時、2 小時、3 小時、4 小時、「關閉定時」5 個檔位之間切換一次。同時相應的狀態指示燈亮（如下表）。定時操作結束 5 秒後，狀態指示燈恢復至當前風速檔位所對應的指示燈顯示狀態。

定時	關閉定時	1 小時	2 小時	3 小時	4 小時
顯示狀態	●●●●	●●●●	●●●●	●●●●	●●●●

提示：● 點亮狀態 ● 熄滅狀態

### 俯仰送風

調節風扇向上或向下送風時，可輕抬或輕按機頭或風扇罩部分進行調整。



### 連接米家APP

本產品已連接米家，可透過米家App操控，並與其他產品互聯互通。

掃描QR Code，下載並安裝米家App，已安裝米家App的用戶將直接進入裝置連接頁面。或在Google Play商店及Apple App Store搜尋「米家」，下載並安裝米家App。打開米家App首頁，在頁面右上角點擊「+」，根據App提示方式新增裝置。



提示：由於米家APP的版級與更新，實際操作可能與以上描述略有差異，請按照當前米家APP內指引進行操作。



### 連接Wi-Fi

同時長按 和 ，聽到長音“嗚”後，進入等待連接狀態，使用APP綁定裝置。



6

## 使用

Wi-Fi 指示燈顯示狀態：

Wi-Fi 狀態	等待連線	連線中	已連線	連接失敗
顯示狀態	橙燈閃爍	藍燈閃爍	藍燈恆亮	橙燈恆亮

## Wi-Fi 重設

出現下表所列等情況時需重設 Wi-Fi，同時長按  和 ，聽到長音「嗶」後，Wi-Fi 重設成功，進入等待連線狀態。

需要 Wi-Fi 重設的情況

更換風扇綁定的米家 APP 帳號
更換風扇連接的路由器
更換路由器的帳號和密碼
米家 APP 無法控制風扇

## 維護與保養

### 可被清洗部件

以下部件可使用清水或稀釋的中性洗滌劑，用軟布或海綿清洗。



11 前風罩



12 扇葉



13 後風罩



5 風扇罩固定環

△ 注意：務必使風扇停止運作、斷電後再拆機、清潔；清洗後請完全乾燥零件再安裝使用，並避免陽光直射。

### 不可被清洗零件

以下零件請使用柔軟的乾布輕輕擦拭。



4 扇葉旋鈕



3 底座



1 摩打 + 支柱

△ 注意：請勿用水沖洗以上零件。  
請勿使用稀釋劑、輕質汽油、清洗劑或鹼性清潔劑。

7

## 故障排除

故障現象	故障原因	解決方法
風扇不運轉	電源插座未通電	連接符合產品要求的電源
	電源線與風扇底座連接不到位	正確連接電源線
	風扇支柱與底座安裝不到位	風扇支柱與底座插口對位，並鎖緊連接螺絲
Wi-Fi 無法連接	連接路由器為 Wi-Fi 5GHz	連接路由器 Wi-Fi 2.4GHz
	風扇持續離線超過半小時	重設 Wi-Fi (請參考 Wi-Fi 重設說明)
扇葉卡停	扇葉被異物卡住	關閉風扇電源，取出異物
	摩打故障	撥打售後電話，聯絡小米售後
風扇搖頭功能不響應	風扇處於搖頭角度校正狀態	等待校正結束，最長14秒

8

## 基本規格

產品名稱	米家智能電風扇 座地式1X	額定頻率	50/60Hz
產品型號	BPLDS01XY	額定功率	15W
產品類型	直流電風扇	產品尺寸	950 × 343 × 330mm
產品毛重	4.2kg	噪 聲	≤55dB(A)
產品淨重	2.8kg	電源線長度	1.6m
額定電壓	100–240V~	無線連接	Wi-Fi IEEE 802.11b/g/n 2.4GHz
風扇葉片	7	調速檔位	4

如需要詳細的電子說明書，請瀏覽 [www.mi.com/global/service/userguide](http://www.mi.com/global/service/userguide)

委託商：小米通訊技術有限公司  
服務電話：852-30773620

製造商：浙江星月電器有限公司  
(小米生態鏈企業)

製造商地址：浙江省金華市永康市總部中心金品大廈二十四樓南側  
本產品售後服務請查詢官網：[www.mi.com/hk/service](http://www.mi.com/hk/service)

說明書版本號：V1.0

# Safety Instructions

Read this manual carefully before use, and retain it for future reference.

## PRECAUTIONS

### Handling the Fan

- ⚠ Turn off and unplug the fan before moving it.
- ⚠ Firmly hold the fan stand to avoid it from falling down and causing personal injury.

### Installation

- ⚠ Make sure the fan is properly installed according to the instructions, so as to avoid electric shocks, fire, personal injury, or other damage.
- ⚠ Do not connect the fan to a power outlet as long as it is not assembled.
- ⚠ Once assembly completed, it's strictly forbidden to remove the guards for any purpose.

### Using the Fan

- ⚠ Immediately stop using the fan if it makes unusual sounds, gives off bad odors, overheats, or rotates irregularly.
- ⚠ Do not lean on or tilt the fan while it is running.
- ⚠ Do not push the fan's head repeatedly so as to avoid damage to the internal mechanism.

### Power Cord

- ⚠ Unplug the power cord from the power outlet before performing any maintenance or moving the fan.
- ⚠ Do not pull the cord, always unplug the fan by holding and pulling the power plug.
- ⚠ The appliance is only to be used with the power supply unit provided with the appliance.
- ⚠ When the power cord is damaged, it must be replaced with a genuine power cord purchased from the manufacturer or after-sales service department.

10

## WARNINGS

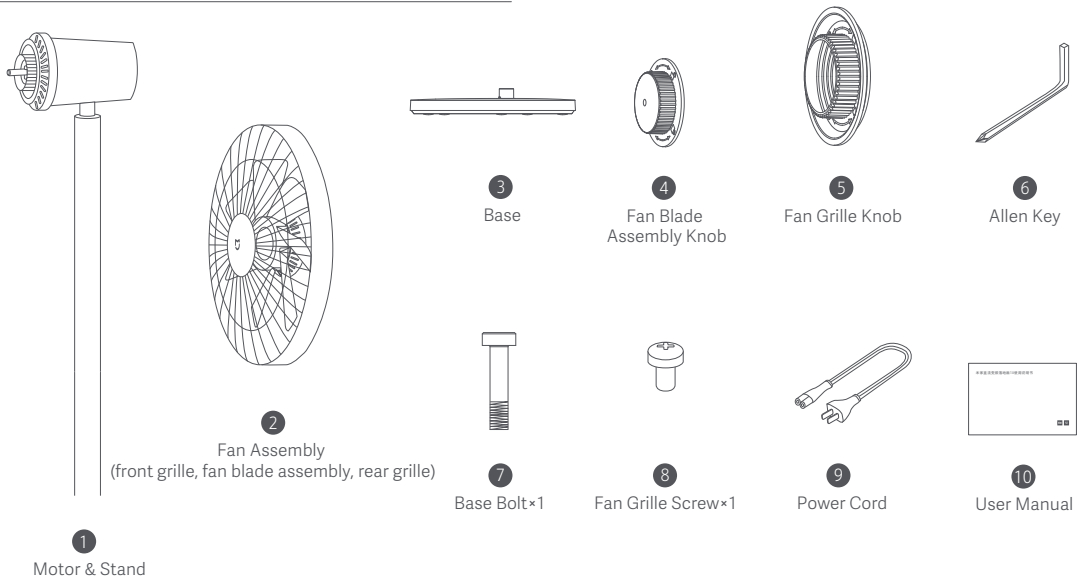
Improper use may lead to electric shocks, fire, personal injury, or other damage.

- ⊘ Do not use this fan in place where it is easy to fall over or where there are other unstable objects nearby.
- ⊘ Do not use this fan in hot and humid environments such as a bathroom.
- ⊘ Do not use this fan if its power cord is damaged or its power plug is loose.
- ⊘ Do not use this fan if its front grille is not installed, or its rear grille is loose or fell off.
- ⊘ Do not disassemble or repair this fan.
- ⊘ Do not pinch, bend, or twist the power cord too much, so as to prevent from exposing or breaking its core.
- ⊘ Do not insert your fingers or any object into the front grille, rear grille, or the fan blades when the fan is in use.
- ⊘ Keep hair and fabrics away from the fan to avoid getting them caught in the fan.
- ⊘ Do not use any improper power outlet.
- ⊘ Do not use the supplied power cord with any other device.
- ⊘ Under normal use of condition, this equipment should be kept a separation distance of at least 20cm between the antenna and the body of the user.
- ⊘ This appliance can be used by children aged from 8 years and above and persons with reduced physical, sensory or mental capabilities or lack of experience and knowledge if they have been given supervision or instruction concerning use of the appliance in a safe way and understand the hazards involved. Children shall not play with the appliance. Cleaning and user maintenance shall not be made by children without supervision.
- ⊘ This appliance is not intended for use by persons (including children) with reduced physical, sensory or mental capabilities, or lack of experience and knowledge, unless they have been given or instruction concerning use of the appliance by a person responsible for their safety.
- ⊘ Children should be supervised to ensure that they do not play with the appliance.
- ⊘ Ensure that the fan is switched off from the supply mains before removing the guard.
- ⊘ If the supply cord is damaged, it must be replaced by a special cord or assembly available from the manufacturer or its service agent.

11

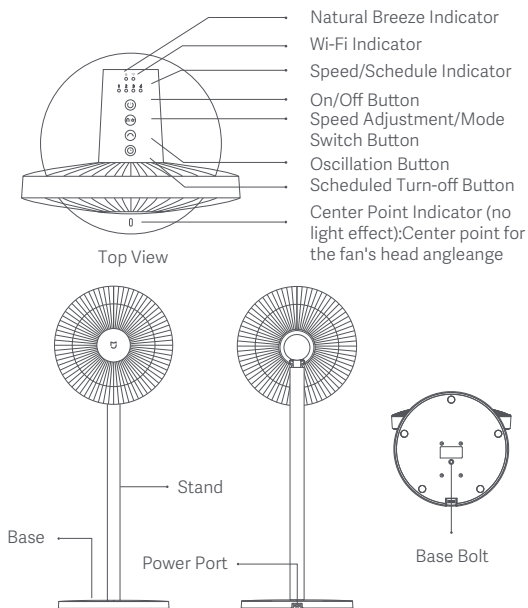
Note: Illustrations of the product, accessories, and user interface in the user manual are for reference purposes only. The actual product and functions may vary due to product enhancements.

## Package Contents



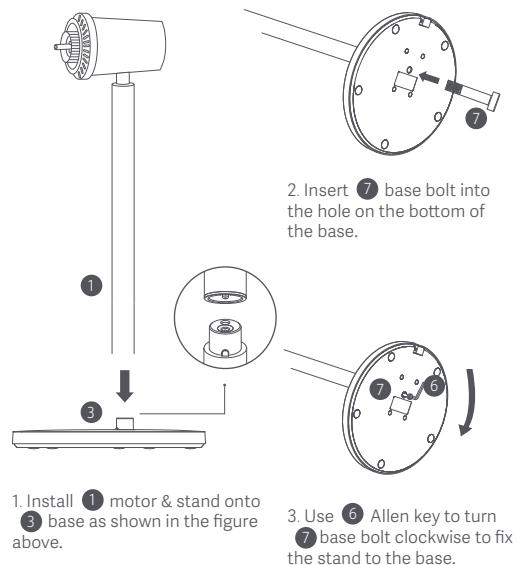
12

## Overview



## Installation Instructions

### Step 1: Base installation



13



# Installation Instructions

## Step 2: Open the fan assembly

Take ② fan assembly apart, then turn the front grille counterclockwise until it separates from the rear grille, as shown in Figure ①. Remove the fan blade assembly as indicated by Figure ②.

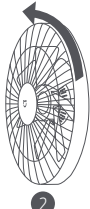


Figure ①

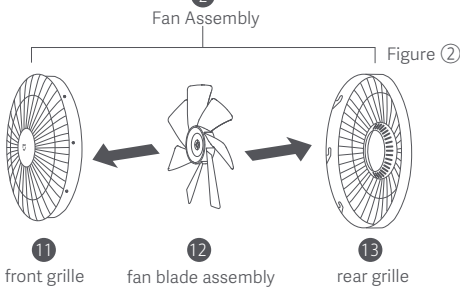
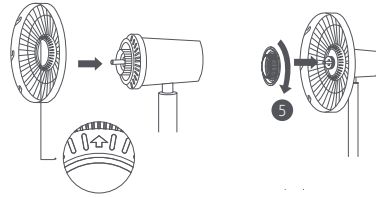


Figure ②

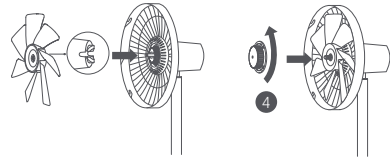
## Step 3: Install the rear grille

Firstly, install the rear grille to the motor's shaft with "↑" facing upwards, and then install ⑤ fan grille knob onto the shaft. Turn the knob clockwise to firmly fix the rear grille to the motor's shaft.



## Step 4: Install the fan blade assembly

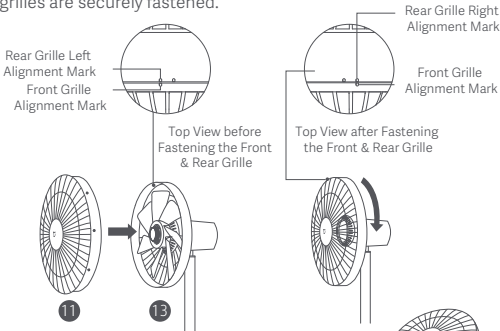
Align the center hole of the fan blade assembly with the motor's shaft and install it onto the shaft, then install ④ fan blade assembly knob onto the motor's shaft. Turn the knob counterclockwise in order to fix the fan blade assembly to the motor's shaft.



# Installation Instructions

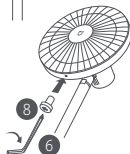
## Step 5: Install the front grille

1. Align ⑪ Front Grille Alignment Mark with ⑬ Rear Grille Left Alignment Mark, and make sure the front grille is properly embedded into the rear grille.  
2. Turn the front grille clockwise until the Front Grille Alignment Mark aligns the Rear Grille Right Alignment Mark. Make sure the grilles are securely fastened.



## Step 6: Fasten the front grille

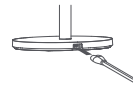
Insert ⑧ fan grille screw into the hole at the bottom of the fan grille. Turn the screw clockwise by using the ⑥ Allen key to tighten it.



# How to Use

## Connect to a power outlet

Connect the power cable to the power port on the base and then plug it into a power outlet. When you hear a beep, the fan is successfully connected to the power supply.



## Turn on/off

### Turn on

Press the button (⏻) to start the fan. When turned on for the first time, the default speed is slow (1). After turning off the fan and turning it back on again, the speed will be the last used one.

### Turn off

When the fan is working, press and hold the button (⏻) to stop it.

## Adjust speed & switch mode

### Adjust speed

Press the button (⏻) to adjust the speed. With each press, the speed will go up one level and the corresponding status indicator(s) will be on (see the table below). After turbo (4), the speed will return to slow (1).

Fan Speed	Slow (1)	Medium (2)	Fast (3)	Turbo (4)
Indicator Status	●●●●	●●●●	●●●●	●●●●

Note: ● means the indicator is on; ● means the indicator is off.

# How to Use

## Switching mode

Press and hold the button (⏻) to switch between direct and natural breeze. The indicator is on while in natural breeze mode and is off while in direct breeze mode. The speed will not be changed when switching modes.

Note: The factory default is direct breeze mode. After turning off the fan and turning it back on again, the mode will be the last used one.

## Control oscillation

Press the button (↻) to enable or disable 140° oscillation. After turning off the fan and turning it back on again, the oscillation setting will be the last used one. Unplug then plug the fan in or reset the Wi-Fi connection, then turn on the fan. It will automatically oscillate its angle if enabling the oscillation function. The oscillation time varies depending on different angles, please wait with patience.

## Set scheduled turn-off

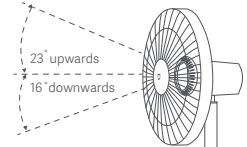
Press the button (⌚) to adjust the scheduled turn-off time. With each press, the scheduled turn-off time will cycle through 1 hour, 2 hours, 3 hours, 4 hours and disabled, and the corresponding status indicator(s) will be on (see the table below). Five seconds after using the scheduled turn-off function, the status indicator will return to the corresponding status of the currently selected speed.

Scheduled Status	Disabled	1 hour	2 hours	3 hours	4 hours
Indicator Status	●●●●	*●●●	**●●	***●	****

Note: \* means the indicator is on; ● means the indicator is off.

## Adjust the Airflow Direction

Gently lift or push down the fan's head or fan grille to adjust the airflow upwards or downwards.



## Connect with the Mi Home App

This product works with Mi Home/Xiaomi Home app\*. Control your device with Mi Home/Xiaomi Home app.

Scan the QR code to download and install the app. You will be directed to the connection setup page if the app is installed already. Or search "Mi Home/Xiaomi Home" in the app Store to download and install it.

Open Mi Home/Xiaomi Home app, tap "+" on the upper right, and then follow prompts to add your device.

\*The app is referred to as Xiaomi Home app in Europe (except for Russia). The name of the app displayed on your device should be taken as the default.

Note: The version of Mi Home app might have been updated, please follow the instructions based on the current app version.



## Connecting to Wi-Fi

Simultaneously press and hold the buttons (⏻) and (⏻). Once you hear a beep, the fan is awaiting a connection, then you can pair it with a device via the app.

# How to Use

## Wi-Fi Indicator Status

Wi-Fi Status	Awaiting connection	Connecting	Connected	Couldn't connect
Indicator Status	Blinking orange	Blinking blue	Blue	Orange

## Reset Wi-Fi

The Wi-Fi connection needs to be reset on the circumstances listed in the table below.

The Mi account that the fan is paired with has been changed.
The router that the fan is connected to has been changed.
The account or password of the router that the fan is connected to has been changed.
The Mi Home/Xiaomi Home app cannot control the fan.

Simultaneously press and hold the buttons (⏻) and (⏻). Once you hear a long beep, the Wi-Fi connection has been reset successfully and then the Wi-Fi is awaiting a connection.

# Daily Care & Maintenance

## Clean the Fan

### Parts that can be washed

The parts listed below can be cleaned with a soft cloth or sponge using water or neutral detergent.



11 Front Grille



12 Fan Blade Assembly



13 Rear Grille



5 Fan Grille Knob

⚠ Note: Stop and unplug the fan, then disassemble it and clean its parts. After cleaning, make sure all parts are completely dry before installing them and using the fan again. Avoid direct sunlight.

### Parts that cannot be washed

The parts listed below can be wiped clean with a soft dry cloth.



4 Fan Blade Assembly Knob



3 Base



1 Motor & Stand

⚠ Note: Do not use water to rinse the parts above. Do not use thinner, gasoline, detergent or alkaline detergent.

# Troubleshooting

Fault	Possible Causes	Solution
The fan doesn't work	No electricity from the power outlet or the fan does not connect to the power.	Connect to a power outlet that meets the fan's requirements.
	The power cable is not properly plugged into the fan's base.	Make sure the power cord is plugged in properly.
	The fan stand and base are not properly installed.	Properly align the fan stand with the base and tighten the base bolt.
Wi-Fi is unable to connect	The Wi-Fi connection is 5 GHz.	Connect to a 2.4 GHz Wi-Fi connection.
	The fan is offline for more than half an hour.	Reset Wi-Fi (refer to instructions on resetting the Wi-Fi)
Fan blades are stuck	Fan blades are stuck by a foreign object.	Unplug the fan and remove the foreign object.
	Motor error	Contact after-sales service
The oscillation function does not work.	The fan is under the auto-oscillation state.	Wait for the auto-oscillation completes. It will last for 14 seconds at most.

18

# Specifications

Name	Mi Smart Standing Fan 1X	Rated Voltage	100-240 V~
Model	BPLDS01XY	Rated Frequency	50/60 Hz
Type	DC standing fan	Rated Power	15 W
Gross Weight	4.2 kg	Item Dimensions	950*343*330 mm
Net Weight	2.8 kg	Noise Emission	≤55 dB(A)
Power Cord Length	1.6 m	Wireless Connectivity	Wi-Fi IEEE 802.11b/g/n 2.4 GHz
Blade of Fan	7	Number of Regulated Speed	4 Speeds
*Radio frequency and radio transmission power			
RF Specification		Operation Frequency	Maximum Output Power
2.4G WIFI		2412-2472MHz	<20 dBm



All products bearing this symbol are waste electrical and electronic equipment (WEEE as in directive 2012/19/EU) which should not be mixed with unsorted household waste. Instead, you should protect human health and the environment by handing over your waste equipment to a designated collection point for the recycling of waste electrical and electronic equipment, appointed by the government or local authorities. Correct disposal and recycling will help prevent potential negative consequences to the environment and human health. Please contact the installer or local authorities for more information about the location as well as terms and conditions of such collection points.

For detailed e-manual, please go to [www.mi.com/global/service/userguide](http://www.mi.com/global/service/userguide)

# WARRANTY NOTICE

THIS WARRANTY GIVES YOU SPECIFIC RIGHTS, AND YOU MAY HAVE OTHER RIGHTS CONVEYED BY LAWS OF YOUR COUNTRY, PROVINCE OR STATE. INDEED, IN SOME COUNTRIES, PROVINCES OR STATES, CONSUMER LAW MAY IMPOSE A MINIMUM WARRANTY PERIOD. OTHER THAN AS PERMITTED BY LAW, XIAOMI DOES NOT EXCLUDE, LIMIT OR SUSPEND OTHER RIGHTS YOU MAY HAVE. FOR A FULL UNDERSTANDING OF YOUR RIGHTS WE INVITE YOU TO CONSULT THE LAWS OF YOUR COUNTRY, PROVINCE OR STATE.

## 1. LIMITED PRODUCT WARRANTY

XIAOMI warrants that the Products are free from defects in materials and workmanship under normal use and use in accordance with the respective Product user manual, during the Warranty Period.

The duration and conditions related to the legal warranties are provided by respective local laws. For more information about the consumer warranty benefits, please refer to Xiaomi's official website <https://www.mi.com/en/service/warranty/>.

Xiaomi warrants to the original purchaser that its Xiaomi Product will be free from defects in materials and workmanship under normal use in the period mentioned above.

Xiaomi does not guarantee that the operation of the Product will be uninterrupted or error free.

Xiaomi is not liable for damages arising from non-compliance with the instructions related to the use of the Product.

## 2. REMEDIES

If a hardware defect is found and a valid claim is received by Xiaomi within the Warranty Period, Xiaomi will either (1) repair the product at no charge, (2) replace the product, or (3) refund the Product, excluding potential shipping costs.

## 3. HOW TO OBTAIN WARRANTY SERVICE

To obtain warranty service, you must deliver the Product, in its original packaging or similar packaging providing an equal degree of Product protection, to the address specified by Xiaomi. Except to the extent prohibited by applicable law, Xiaomi may require you to present proofs or proof of purchase and / or comply with registration requirements before receiving warranty service.

## 4. EXCLUSIONS AND LIMITATIONS

Unless otherwise stipulated by Xiaomi, this Limited Warranty applies only to the Product manufactured by or for Xiaomi and identifiable by the trademarks, trade name or "Xiaomi" or "Mi" logo.

The Limited Warranty does not apply to any (a) Damage due to acts of nature or God, for example, lightning strikes, tornadoes, flood, fire, earthquake or other external causes; (b) Negligence; (c) Commercial use; (d) Alterations or modifications to any part of the Product; (e) Damage caused by use with non-Xiaomi products; (f) Damage caused by accident, abuse or misuse; (g) Damage caused by operating the Product outside the permitted or intended uses described by Xiaomi or with improper voltage or power supply; or (h) Damage caused by service (including upgrades and expansions) performed by anyone who is not a representative of Xiaomi.

20

It is your responsibility to backup any data, software, or other materials you may have stored or preserved on the product. It is likely that the data, software or other materials in the equipment will be lost or reformatted during the service process, Xiaomi is not responsible for such damage or loss.

No Xiaomi reseller, agent, or employee is authorized to make any modification, extension, or addition to this Limited Warranty. If any term is held to be illegal or unenforceable, the legality or enforceability of the remaining terms shall not be affected or impaired. Except as prohibited by laws or otherwise promised by Xiaomi, the after-sales services shall be limited to the country or region of the original purchase.

Products which were not duly imported and/or were not duly manufactured by Xiaomi and/or were not duly acquired from Xiaomi or a Xiaomi's official seller are not covered by the present warranties. As per applicable law you may benefit from warranties from the non-official retailer who sold the product. Therefore, Xiaomi invites you to contact the retailer from whom you purchased the product.

## 5. IMPLIED WARRANTIES

Except to the extent prohibited by applicable law, all implied warranties (including warranties of merchantability and fitness for a particular purpose) will have a limited duration up to a maximum duration of this limited warranty. Some jurisdictions do not allow limitations on the duration of an implied warranty, so the above limitation will not be applied in these cases.

## 6. DAMAGE LIMITATION

Except to the extent prohibited by applicable law, Xiaomi shall not be liable for any damages caused by accidents, indirect, special or consequential damages, including but not limited to loss of profits, revenue or data, damages resulting from any breach of express or implied warranty or condition, or under any other legal theory, even if Xiaomi has been informed of the possibility of such damages.

Some jurisdictions do not allow the exclusion or limitation of special, indirect, or consequential damages, so the above limitation or exclusion may not apply to you.

## 7. XIAOMI CONTACTS

For customers, please visit the website: <https://www.mi.com/en/service/warranty/>

The contact person for the after-sale service may be any person in Xiaomi's authorized service network, Xiaomi's authorized distributors or the final vendor who sold the products to you. If in doubt please contact the relevant person as Xiaomi may identify.

21